

# 2018 LAND AWARDS

NOMINATION KIT

PRESENTED BY





## Celebrating big ideas and bold leadership in sustainable land use and real estate.

The Land Awards were created by the Real Estate Foundation of BC (REFBC) to highlight and celebrate excellence in sustainable land use.

The awards program recognizes outstanding projects and standout leaders who work to build healthy, resilient communities and natural environments.

Awards will be presented at the Land Awards Gala, a night of celebration and inspiration. This year's Gala will be held on October 11, 2018, in Vancouver, BC.



### AWARDS PROGRAM

---

#### LAND AWARDS (3)

Celebrating successful *projects* in three categories:

- ▶ Land Use and Conservation
- ▶ Built Environment
- ▶ Fresh Water and Food Systems

#### LAND CHAMPION AWARD

Recognizing the outstanding achievements of *an individual*.

#### EMERGING LEADER AWARD (NEW!)

Highlighting early successes of *an individual*.

# LAND AWARDS

## CATEGORIES

Land Awards recognize projects that raise the bar for innovation, collaboration, and sustainability in land use and real estate. Awards can be given for research, tools, policies, community plans, buildings, programs, campaigns, and other initiatives.

Beginning in 2018, awards will be given by subject area. One award will be presented in each of three categories:



### Land Use and Conservation

Land use is the human use and management of land. This award category includes broad land and community planning projects, conservation and ecosystem protection, and restoration of land affected by resource development.

Projects nominated for this award could relate to:

- Land use planning at a regional or territorial scale
- Conservation and ecosystem protection
- Natural capital and ecosystem services
- Responsible resource development
- First Nations' land and title



### Built Environment

The built environment includes all of the physical buildings and infrastructure of a community, as well as the planning, development, and real estate practices that integrate them. This award category includes community planning, as well as housing, transportation, buildings, and infrastructure.

Projects nominated for this award could relate to:

- Affordable housing
- Green buildings and infrastructure
- Real estate and development
- Public transit and active transportation
- Public space
- Smart growth and urban containment
- Climate change adaptation



### Fresh Water and Food Systems

Land use and real estate practices have a significant impact on fresh water and food systems. This award category recognizes projects that help communities protect freshwater ecosystems (rivers, lakes, streams), manage and conserve water, or build local and sustainable food systems.

Projects nominated for this award could relate to:

- Freshwater conservation
- Watershed governance
- Streamkeeping and habitat restoration
- Agricultural planning
- Extension services and training for new farmers
- Farmland access and tenure
- Local food initiatives



### WHAT KINDS OF PROJECTS ARE ELIGIBLE?

Land Award nominations are open to any project related to land use and/or real estate, including:

- ▶▶ Policy development
- ▶▶ Community infrastructure
- ▶▶ Research and education
- ▶▶ Plans, practices, tools
- ▶▶ New technologies, services
- ▶▶ Financial models
- ▶▶ Public engagement
- ▶▶ Citizen science

# LAND AWARDS

## ELIGIBILITY + JUDGING

### ELIGIBILITY

To be eligible for nomination, projects must meet the following criteria:

- ▶▶ Project is based in British Columbia and led by an organization with strong ties to BC (can be non-profit, public, or private sector)
- ▶▶ Project is related to land use and/or real estate
- ▶▶ Project is undertaken in partnership with others
- ▶▶ Project must have taken place within the last two years

### NOMINATIONS

A complete nomination includes:

- ▶▶ Nomination Form - Land Awards
- ▶▶ Photos, images (3+)
- ▶▶ Letters of support (2+)

### JUDGING CONSIDERATIONS

#### Innovation and impact

- ▶▶ The project finds a new or improved solution to a real-world problem.
- ▶▶ The project can act as a model for others.
- ▶▶ The project makes a lasting contribution to a profession, a community, or an environment.

#### Collaboration and engagement

- ▶▶ The project brings diverse partners together to build a solution that works for many.
- ▶▶ The project team engages with communities and uses community feedback to inform outcomes.

### JUDGING

Land Awards are judged by the Land Awards Selection Committee, which is made up of five external judges who are chosen for their expertise in the award subject categories.

## 2016 AWARD WINNERS

### The Beer Farm Persephone Brewing Company

An agricultural model that combines growing, composting, brewing, and dining in one site. Persephone also leases land to local farmers, employs adults with developmental disabilities, and creates opportunities for social enterprise.



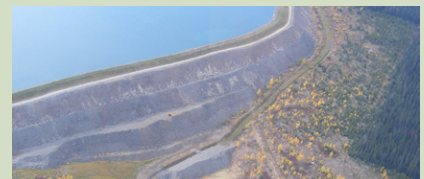
### The Squamish-Lillooet Regional District Electoral Area B, District of Lillooet and St'át'imc Agricultural Plan

A collaborative agricultural plan developed in partnership between a regional district, an electoral area, and a First Nation. The plan will be implemented by a new non-profit, the Lillooet Agricultural and Food Society.



### Moving Towards Reconciliation Fair Mining Collaborative

The Collaborative works at the invitation of First Nations communities affected by mining and resource development. Through tools like the Fair Mining Practices Code and the Mine Medicine Manual, the Collaborative provides both technical information and practical assistance.



# LAND CHAMPION AWARD

The Land Champion Award recognizes a leader who has made a significant impact on land use, conservation, and/or real estate practices in BC.

The Land Champion Award goes to a person who shares REFBC's view that, by making choices that respect the balance between nature and human needs, we can ensure that future generations continue to share the high quality of life we enjoy today.

## PAST LAND CHAMPIONS



**Deborah Curran (2016)**

An environmental lawyer and educator, Deborah is a national leader in law reform, applied research, and education. Through her work as co-founder of Smart Growth BC, acting executive director of the Environmental Law Centre at the University of Victoria, and as a practicing lawyer, Deborah has established herself as a thought leader on sustainable built environments and freshwater governance.



**Gary Runka (2014)**

As first manager of the BC Land Commission (forerunner of the Agricultural Land Commission), Gary has worked with public, private, and non-profit sector groups to facilitate informed land use planning and natural resource decisions.



**Carol Newell (2013)**

A philanthropist and conservationist, Carol has invested her wealth to conserve millions of hectares of land. On Cortes Island, she worked with the local community to make land available for housing, parks and trails, and conservation.

## ELIGIBILITY

To be eligible for nomination, candidates must meet the following criteria:

- ▶ Nominee must be a BC resident
- ▶ Nominee has made a lasting contribution to sustainable land use or real estate practices in BC

## NOMINATIONS

A complete nomination includes:

- ▶ Nomination Form - Land Champion Award
- ▶ Photos, images (3+)
- ▶ Letters of support

## JUDGING CONSIDERATIONS

### Leadership and legacy

- ▶ The Land Champion has a clear vision for positive change, and has committed to making that vision a reality.
- ▶ The Land Champion has made exemplary contributions, over time, in the areas of land use, conservation, and real estate.
- ▶ The Land Champion inspires others to action - through leadership, mentorship, and building community capacity.

## JUDGING

Awards for individuals are judged by the Land Champion and Emerging Leader Committee, which includes the last three Chairs of REFBC's Board of Governors.

# EMERGING LEADER AWARD

**NEW!**

The Emerging Leader Award recognizes the impact that a new leader is having on land use, conservation, or real estate in BC.

An Emerging Leader is someone who has taken on a new role within their community, organization, or profession, and has demonstrated early successes and the capacity to make wider change.

Eligibility isn't tied to an age range or career level. An Emerging Leader could be:

- ▶▶ A student or young professional entering a field
- ▶▶ A community volunteer working to make change
- ▶▶ An established professional who has changed career directions or recently stepped into a leadership role



## ELIGIBILITY

To be eligible for nomination, candidates must meet the following criteria:

- ▶▶ Nominee must be a BC resident
- ▶▶ Nominee has made contributions to sustainable land use or real estate practices in BC
- ▶▶ Nominee has been demonstrating leadership (at a professional or community level) for less than five years

## NOMINATIONS

A complete nomination includes:

- ▶▶ Nomination Form - Emerging Leader Award
- ▶▶ Photos, images (3+)
- ▶▶ Letters of support (2+)

## JUDGING CONSIDERATIONS

### Leadership and initiative

- ▶▶ The Emerging Leader is a self-starter, who demonstrates exceptional drive, determination, and initiative.
- ▶▶ The Emerging Leader has a vision for positive change, and has made contributions (at a community, professional, or organizational level) to make that vision a reality.

### Collaboration and community-building

- ▶▶ The Emerging Leader works to inspire and empower others.
- ▶▶ The Emerging Leader builds trust and capacity within their community.

## JUDGING

Awards for individuals are judged by the Land Champion and Emerging Leader Committee, which includes the last three Chairs of REFBC's Board of Governors.

# Submitting a Nomination

Each nomination should include the following:

- ▶ The appropriate nomination form ( [Land Award](#) | [Land Champion](#) | [Emerging Leader](#) )
- ▶ At least three photos or images
- ▶ Letters of support

Nominators may also include additional supporting documents (reports, CVs, news articles, links to websites and projects) to help communicate the project or person's impact.

If a nomination includes many links, or if the links are to long articles or videos, it is unlikely that judges will have time to read/watch them all. Please choose support material carefully.

If you have questions about eligibility or the nomination process, please contact Stephanie Butler, REFBC Communications Manager, by phone (604-343-2620) or email ( [stephanie@refbc.com](mailto:stephanie@refbc.com) ).

Please submit a completed nomination by email to [stephanie@refbc.com](mailto:stephanie@refbc.com) by 6:00pm on Thursday, June 7, 2018. In fairness to other nominees, late nominations will not be accepted.

## DEADLINES

### Nominations open

Thursday, April 5, 2018 (@ 9am)

### Nominations close

Thursday, June 7, 2018 (@ 6pm)

REFBC will announce the Land Champion, the Emerging Leader, and Land Awards finalists in September 2018.

All awards will be presented at the Land Awards Gala on Thursday, October 11, 2018.

## FREQUENTLY ASKED QUESTIONS

### Can I self-nominate?

Land Award nominations may be submitted by the lead organization.

Land Champion and Emerging Leader nominations must be submitted by another individual (who is not a family member of the nominee).

### I've nominated a project in a past year - can I nominate the project again?

Yes, if project work has continued within the last two years.

### My organization isn't a non-profit, are we still able to nominate a project?

Absolutely! We believe that all organizations and sectors have a role in championing sustainable attitudes and practices. Nominations are open to non-profit organizations, public institutions, and private companies.

### Can I nominate someone who has passed away?

The Land Champion Award may be given posthumously, in recognition of a lifetime of work.

The Emerging Leader Award is intended to recognize someone who has made early successes and is poised to become a strong leader within their organization, community, or sector. This award should be given to a living person.

# SAVE THE DATE: 2018 LAND AWARDS GALA

October 11, 2018 | reception 6pm | dinner 7pm | awards 8pm

Roundhouse Community Centre | 181 Roundhouse Mews, Vancouver



[LANDAWARDS.COM](http://LANDAWARDS.COM)

[REFBC.COM](http://REFBC.COM)

## ABOUT US

The Real Estate Foundation of BC is a philanthropic organization that helps advance sustainable land use in British Columbia. We provide grants to non-profit organizations working to improve BC communities through responsible and informed land use, conservation, and real estate practices.

In addition to funding research, education, and law reform initiatives, we conduct research on land use trends and work to convene and connect organizations working on BC land use issues.

While the Foundation makes grants to non-profits only, Land Awards are given in all sectors. We believe that sharing knowledge and connections builds bridges and supports real progress toward sustainability.